



RIGHT STUFF EQUIPMENT

AER SATELLITE TRAY & CARTON FORMING MACHINES

Standard Features

- 304 Stainless Steel Frame
- 15 Minute Tooling Changeover Time
- Tooling is Made of All Stainless Steel Material
- 240 VAC / 3 Phase Electricals
- Central Lube Points for Bearings
- AB Powerflex 4 Controller
- Thompson Shafts Used for Linear Bushing Surfaces
- Safely Interlocked "Lexan" Guarding & Access Panels
- 1/2 Horsepower Motor
- Braked Casters on Adjustable Legs
- Remote Start/Stop Station-Movable up to 10" from Machine
- 17" Tall Hopper for Blank Cartons
- Speeds Up to 90 Cartons Per Minute Depending on Carton and Machine Size
- Self Contained Becker Vacuum Pump

Options

- 480 VAC 3 Phase Electricals
- Photo-Eye or Footswitch Control to Bypass Vacuum System/Carton on Demand (Switchable)
- Nordson Hot Melt Glue Systems
- Frame Base to Raise Machine over 10"
- Start/Stop Footswitch with Guard
- "Two Up" or Double Head Sets of Tooling
- Venturi Style Vacuum Generator
- Extended / High Capacity Hopper



MODELS

10-18

16-26

22-34

22-44

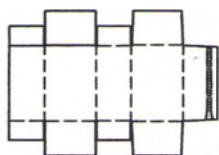
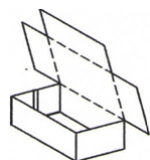
Tooling Available

- Lock Style Cartons with or without Lids
- Glued Cartons with or without lids
- Hollow Wall or "Frame View" Boxes
- Simplex Cartons

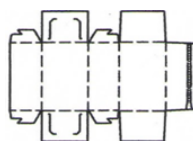
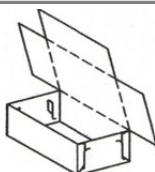


WWW.RIGHTSTUFFEQUIPMENT.COM

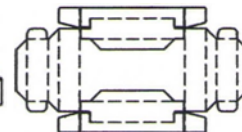
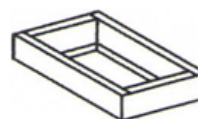
CARTON STYLES



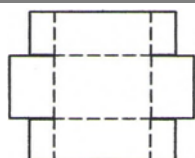
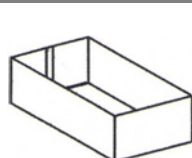
TOP LOAD GLUE STYLE 3-FLAP



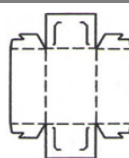
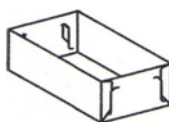
STRIPPER LOCK 3-FLAP LID



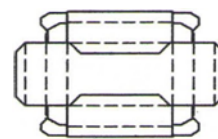
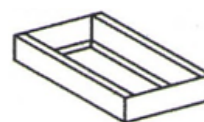
SIMPLEX FULL FRAME VIEW



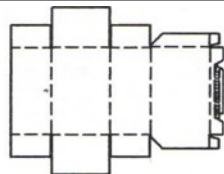
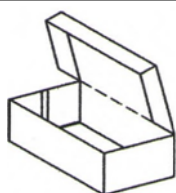
GLUE STYLE TRAY



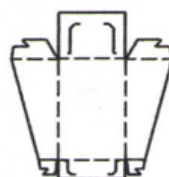
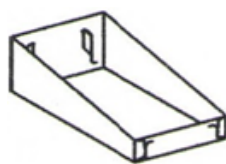
STRIPPER LOCK TRAY



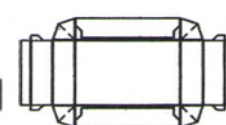
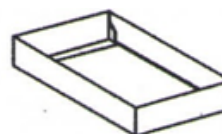
SIMPLEX HALF FRAME VIEW



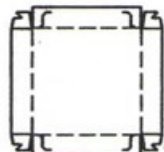
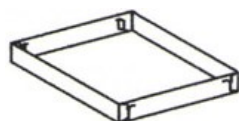
TOP LOAD 3-FLAP 'HOODED' GLUE
STYLE



STRIPPER LOCK DISPLAY TARY



SIMPLEX CORNER LOCK



STRIPPER LOCK LOW SIDEWALL TRAY

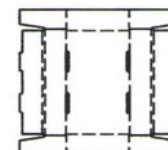
MODELS

10-18

16-26

22-34

22-44



SIMPLEX BOTTOM LOCK

RIGHT STUFF EQUIPMENT

1605 E. 69TH AVENUE, DENVER, CO 80229

303.327.4704 (PH)

303.327.4708 (FAX)

WWW.RIGHTSTUFFEQUIPMENT.COM

